

# WIFI Solution

Preparations

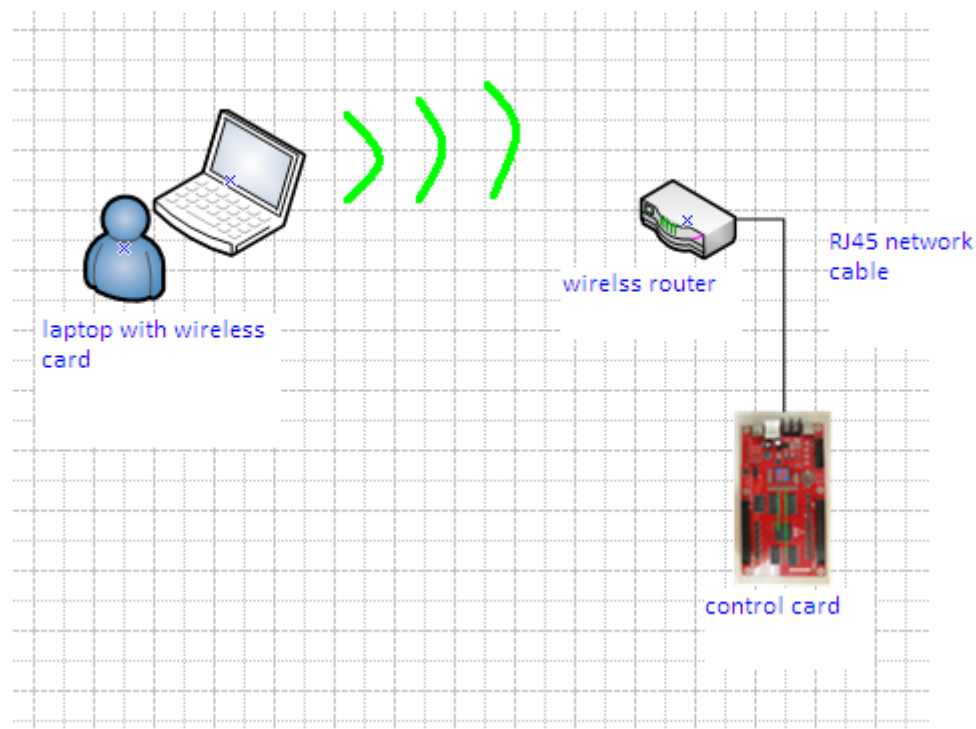
Hardware:

Computer has a built-in WLAN card, wireless router, control card

Software:

Led editor software, LEDset2.0 software

Connection diagram:



Conditions:

Please make sure that computer and led sign should be in one local area network.

Step1, please connect control card with wireless router through network cable.

Step2, please detecting wireless router on computer and make computer get IP through automatically.

For example, gateway of wireless router is **192.168.8.1**. Auto IP of computer is **192.168.8.35**.

Step3, please open LEDset2.0 software and find control card IP. If you could not

detect control card IP, then you need to Restore control card IP address through LEDset2.0 software.

Click on  Restore control card IP address and then Next, then input the 20080808 and make control card IP like 192.168.8.11. Pay attention that control card IP and computer IP should be in the same network segment.



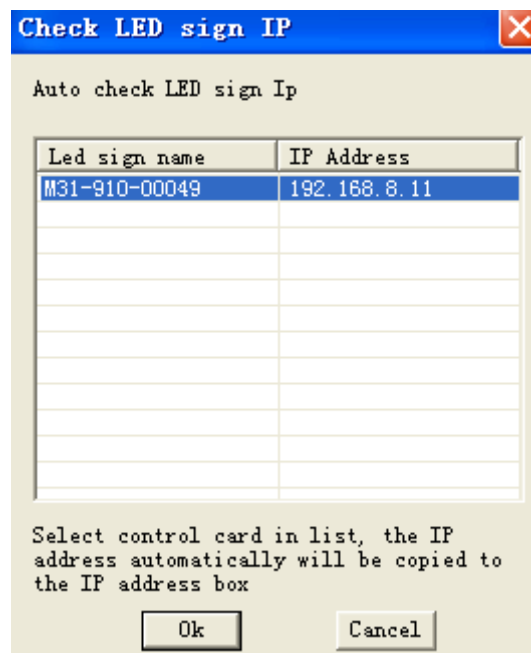
Enter (20080808) | 20080808 | New IP address | 192.168.8.11 |

**Restore**

Then click on Restore button.

Step4, please click on  Start intelligent setup Wizard to do configuration for the control card. Please refer to Instructions of LEDset2.0 software in details.

Step5, after finished step4, please open LED editor software in computer. Click on Help in Menu bar-→Auto check led sign IP



**Check LED sign IP**

Auto check LED sign Ip

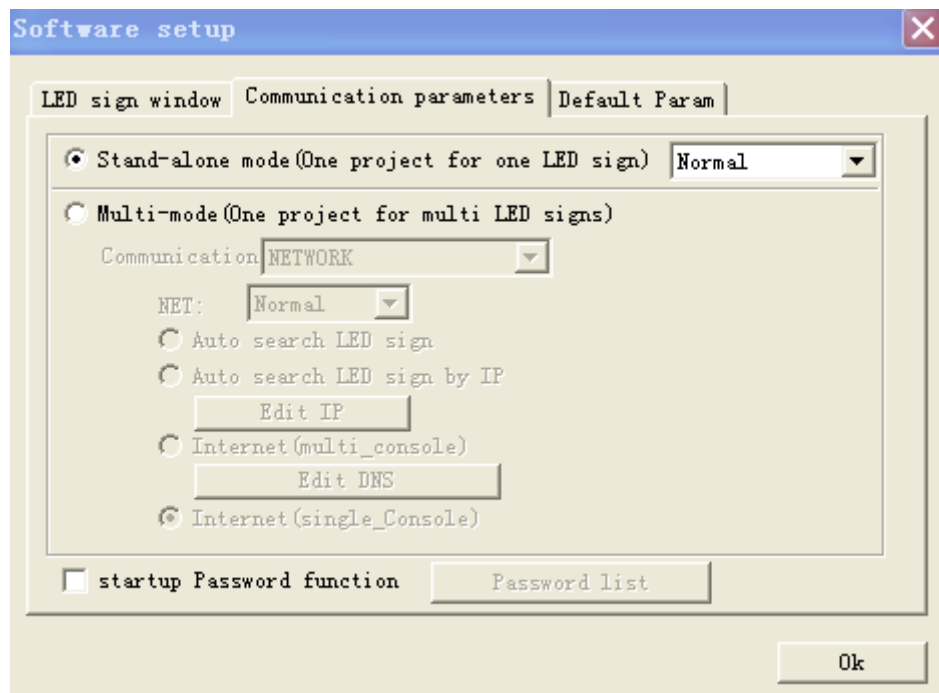
Led sign name	IP Address
M31-910-00049	192.168.8.11

Select control card in list, the IP address automatically will be copied to the IP address box

Ok Cancel

Step6, click on Options in Menu bar→software setup→LED sign window, please input right pixels.

Then Communication parameters→Stand-alone mode-→OK



Step7, please make program and send it.

