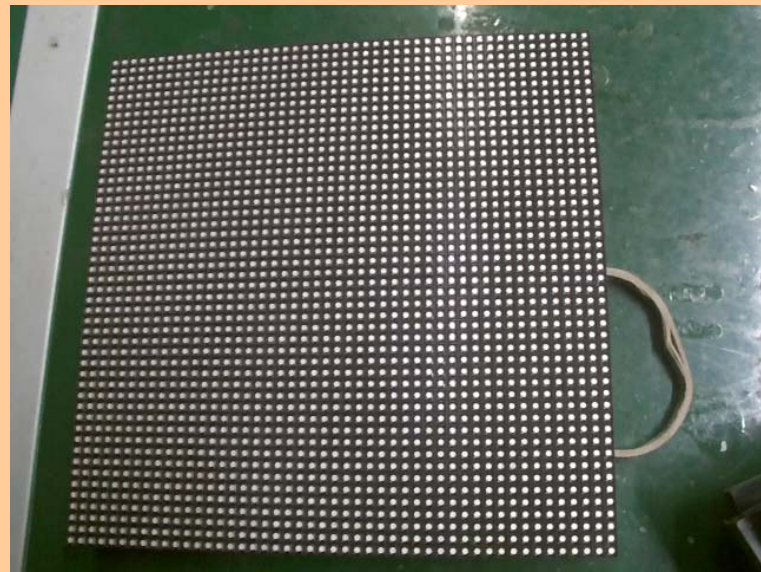
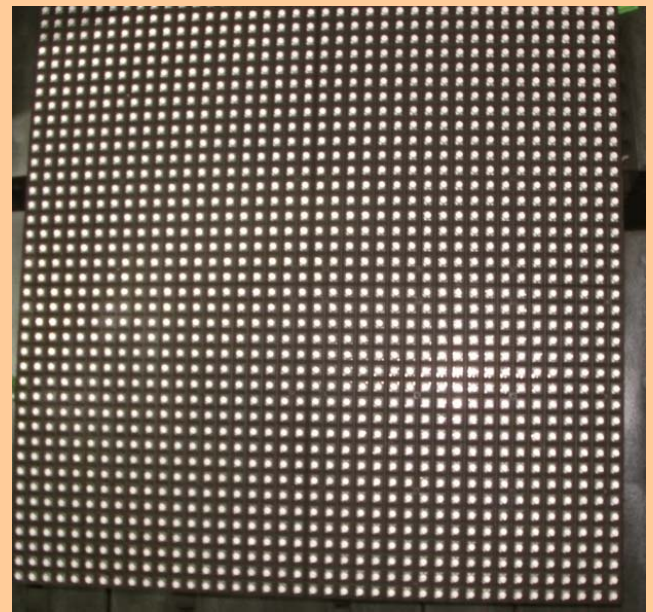


Indoor Full Color Rental LED Screen with Ultra Slim and Lightweight Die-casting Aluminum Cabinet (PH4mm, PH5mm, 6mm)

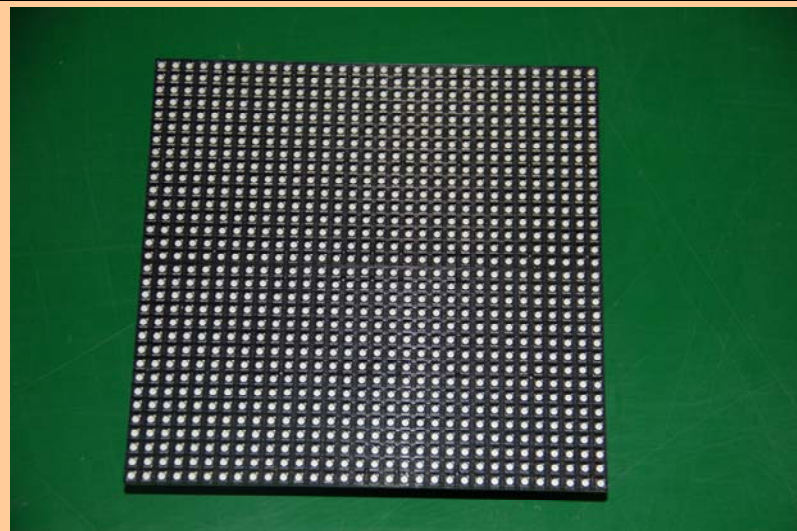
Comparison Between Regular LED Module and Big LED Module



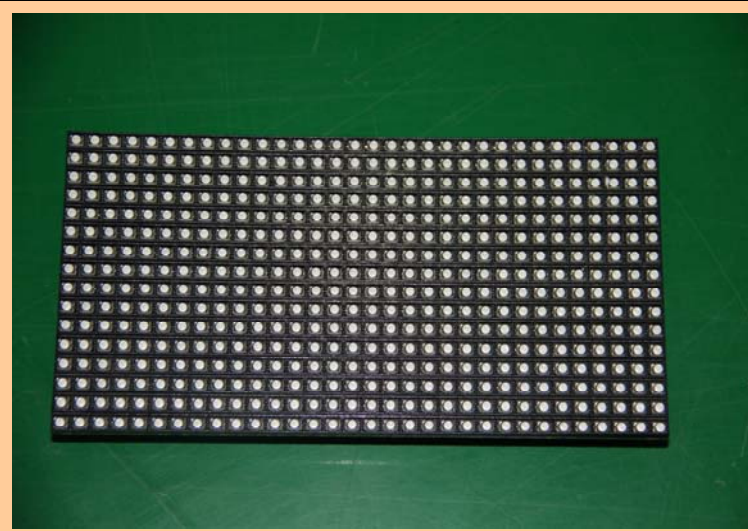
PH5mm 48*48 dots (Big LED Module)



PH6mm 40*40 dots (Big LED Module)



PH5mm 32*32 dots (Regular LED Module)

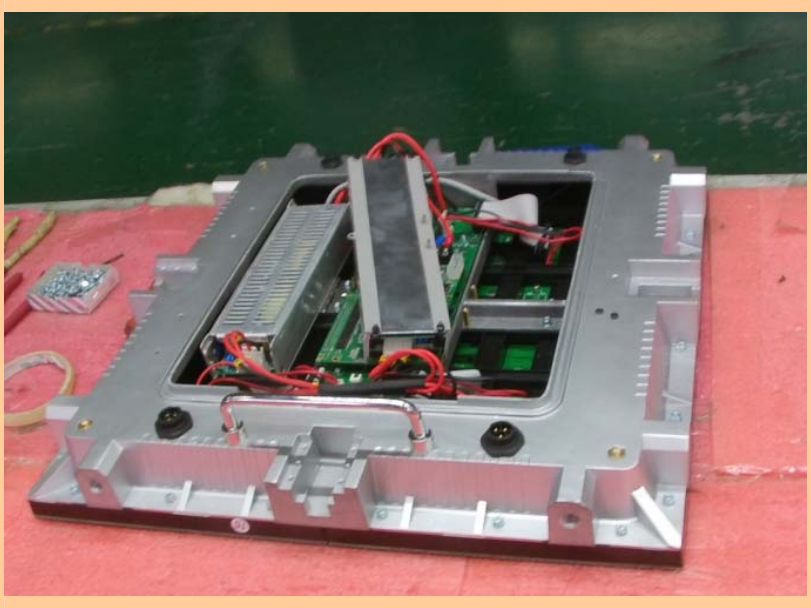
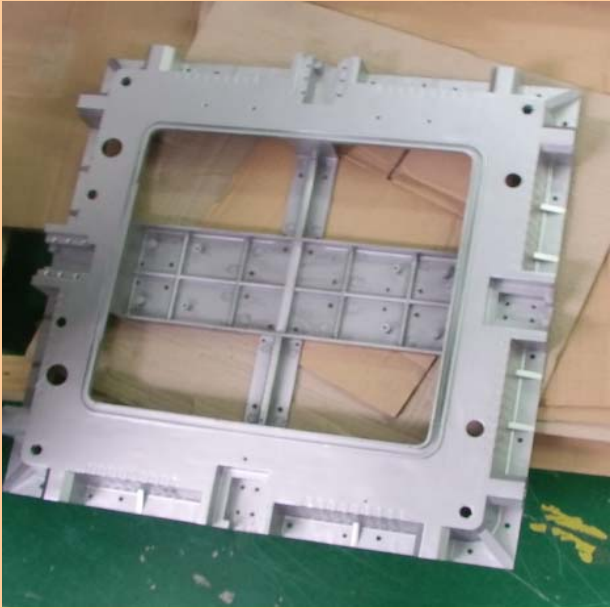


PH6mm 32*16 dots (Regular LED Module)

PS: New LED screen with die-casting aluminum cabinet is composed of big LED modules to increase flatness.

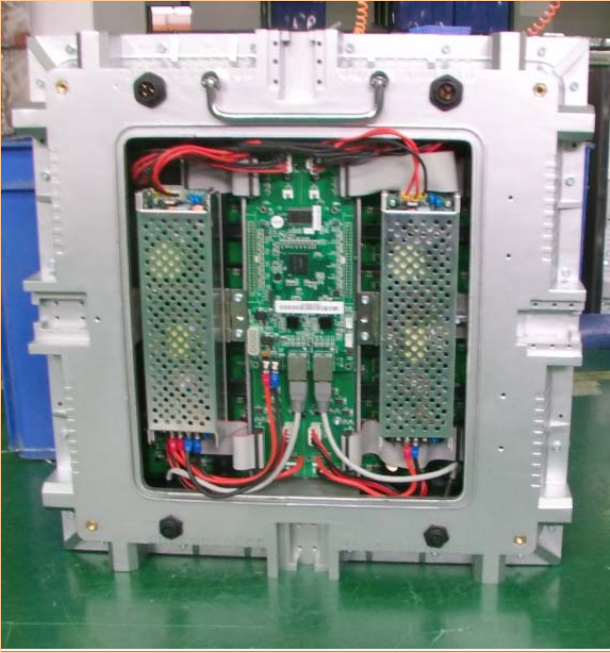
Address: ERALED Industry Park, Xincheng Road, Shajing town, Bao an District, Shenzhen, China
Email: manager@eraled.cn MSN: lisa-eraled@msn.com, Skype : lisa-eraled

Assembly Line



Empty Die-casting Aluminum Cabinet

Assembling Modules ,Power Supplies and Receiving Card



Assembling Handle

Assembling Lock Button and Backdoor with Fans

PS: Dimension of PH4mm , PH5mm and PH6mm cabinet is fixed 480mm*480mm. One cabinet is composed of 4 pieces of big LED modules.

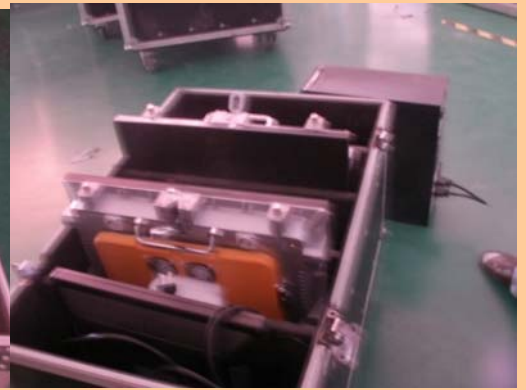
Back view of LED Screen After Installation



Front view of LED Screen After Installation



Packing with Flight Case



Ps: Indoor LED screen with Die-casting aluminum cabinet is mainly for rent because of light weight. So it is easy and fast to assemble, disassemble and transport it.

Address: ERALED Industry Park, Xincheng Road, Shajing town, Bao an District, Shenzhen, China
Email: manager@eraled.cn MSN: lisa-eraled@msn.com, Skype : lisa-eraled

Working Sketch





Shenzhen ERALED Optoelectronics Co., Ltd.



www.eraled.biz

Address: ERALED Industry Park, Xincheng Road, Shajing town, Bao an District, Shenzhen, China
Email: manager@eraled.cn MSN: lisa-eraled@msn.com, Skype : lisa-eraled

